



Backflow Prevention

Course Coordinator: Mari Kearnl, mkearl@treeo.ufl.edu or 352/392-9570 ext. 229

Advanced Backflow Assembly Tester

Apr. 13-14, 2009 Gainesville, FL 090310

\$245

FBPE PDHs 0004040: PDHs: 10

FDEP OCP DW/WW CEUs: 1: Advanced: 4792 DW or WW

Prerequisite - Student must be a current certified backflow tester holding one of these three certificates: ABPA, FCCC & HR @ USC, or UF/TREEO.

Course will cover advanced backflow prevention assembly testing procedures.

These will include:

1. test the DCVA with a sight tube
2. test the DCVA with a 1.0 psi tube.
3. test the DCVA with the differential pressure gauge and two hoses
4. test the RP with the differential pressure gauge and three hoses attached
5. test the RP with backpressure present
6. test the RP with the differential pressure gauge and only one hose
7. test the SVB with the differential pressure gauge
8. test the PVB with the differential pressure gauge and two hoses

Backflow Prevention Assembly Repair and Maintenance Training and Certification

Jan. 30-31, 2009 Sarasota, FL 090631

Feb. 4-6, 2009 Lake Buena Vista, FL 090720

Mar. 9-10, 2009 Greenville, NC 090798

Mar. 13-14, 2009 Sarasota, FL 090692

Mar. 18-20, 2009 Gainesville, FL 090537

Mar. 19-21, 2009 Lake Worth, FL 090822

May 8-9, 2009 Sarasota, FL 090693

June 8-10, 2009 Lake Buena Vista, FL 090719

June 12-13, 2009 Sarasota, FL 090694

July 13-15, 2009 Gainesville, FL 100089

Oct. 12-14, 2009 Gainesville, FL 100097

Dec. 14-16, 2009 Gainesville, FL 100094

\$450

CEUs: 1.7; FBPE PDHs 0004040:17.0

Backflow Prevention Recertification Review

May 2, 2009 Bradenton, FL 090781

May 28, 2009 Gainesville, FL 090318

June 4, 2009 Lake Buena Vista, FL 090716

July 27, 2009 Altamonte Springs, FL 100093

Oct. 1, 2009 Lake Buena Vista, FL 100059

Nov. 2, 2009 Altamonte Springs, FL 100098

Nov. 5, 2009 Lake Buena Vista, FL 100058

Dec. 3, 2009 Lake Buena Vista, FL 100057

Dec. 7, 2009 Altamonte Springs, FL 100095

\$100

FDEP OCP DW/WW CEUs: 0.7: Intermediate: 4786

FBPR Construction Industry Licensing Board Provider #: 0000995; FBPR Construction Industry Licensing Board Course #: 0000710 - 7 hours

Time: 8:00 a.m. - 4:30 p.m.

Special Notice To Florida Licensed Drinking Water, Wastewater and Distribution System Operators: Operators requiring CEUs toward renewal of their licenses cannot take the same course in the renewal cycle 2009-2011 that they took during the renewal cycle 2007-2009. Taking the same course in back-to-back renewal periods is prohibited by the FDEP Operator Certification Program. Operators will need to wait until the renewal period 2011-2013 if they want to take the same course again and receive CEU credits.

FDEP OCP DW/WW CEUs: 0.7: Intermediate: 4786

FBPR CILB Provider #: 0000995; Course #: 0000710 – 7 hrs

Time: 8:00 a.m.

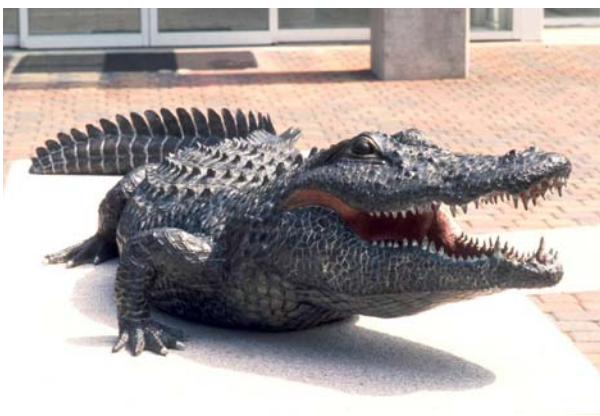
If your certification expired within the past twelve months, you must take the review. If your certification expired more than 12 months ago, you must take the [Backflow Prevention Tester Training and Certification Course](#).

If your certification is from a center other than a UF TREEO-sponsored organization, you are required to take the Backflow Prevention Review course as well as the [Backflow Prevention Exam](#). At the time of registration students holding certification from an alternate organization must provide proof of that certification via fax at 352/392-6910. If your certification is from an alternate organization you MUST be current in your certification to take the TREEO courses. Those who cannot provide proof will not be awarded TREEO certification. Those

Excellence in Environmental Training

www.treeo.ufl.edu

3900 SW 63 Blvd • Gainesville, FL 32608 • 352/392-9570



Backflow Prevention

FDEP OCP DW/WW CEUs: 1.7: Advanced: 4783
 FBPR CILB Provider #: 0000995; Course #: 0000709; Hours: 10.0
 (Including BSP)

Time: Day One and Two: 8:00 a.m. - 4:30 p.m.

Time: Day Three: 8:00 a.m. - 3:00 p.m.

Special Note: If you take the **Backflow Prevention Assembly Repair and Maintenance Training and Certification** course during the same year you are due for re-certification, this qualifies as taking the re-certification exam for only \$100, which is a \$100 savings if you had planned to take the review option.

An advanced course for certified backflow testers, this course provides you with hands-on experience on the repair and maintenance of large diameter backflow preventers from various manufacturers. Instructors discuss advanced testing, troubleshooting and safety procedures. **You must hold a current Backflow Prevention Assembly Tester Certification to attend this class.**

[Backflow Prevention Assembly Tester Training and Certification](#)

Apr. 17-25, 2009	Sarasota, FL	090696
May 4-8, 2009	Lake Buena Vista, FL	090713
May 11-15, 2009	Destin, FL	090697
May 11-15, 2009	Gainesville, FL	090312
May 15-23, 2009	Sarasota, FL	090702
June 18-27, 2009	Lake Worth, FL	090823
June 19-27, 2009	Sarasota, FL	090701
July 6-10, 2009	Altamonte Springs, FL	090566
July 20-24, 2009	Gainesville, FL	100096
Aug. 3-7, 2009	Lake Buena Vista, FL	100064
Sep. 14-18, 2009	Gainesville, FL	100092
Oct. 5-9, 2009	Lake Buena Vista, FL	100063
Dec. 7-11, 2009	Gainesville, FL	100091
Dec. 7-11, 2009	Lake Buena Vista, FL	100062

\$595

holding certification from an alternate organization are required to sit for an 80-question exam and hands-on evaluation (RP, DC and PVB) in our working lab. All exams are closed book. Upon successful completion of both the written and hands-on exam you will be awarded UF TREEO certification in Backflow Prevention Assembly. Costs are \$150 for the review course and \$150 for the exam.

[Backflow Prevention Recertification Exam](#)

May 9, 2009	Bradenton, FL	090781-1
May 29, 2009	Gainesville, FL	090318-1
June 5, 2009	Lake Buena Vista, FL	090716-1
July 28, 2009	Altamonte Springs, FL	100093-1
Oct. 2, 2009	Lake Buena Vista, FL	100059-1
Nov. 3, 2009	Altamonte Springs, FL	100098-1
Nov. 6, 2009	Lake Buena Vista, FL	100058-1
Dec. 4, 2009	Lake Buena Vista, FL	100057-1
Dec. 8, 2009	Altamonte Springs, FL	100095-1

\$100

Time: 8:00 a.m. - 4:00 p.m.

The exam will consist of a written portion (1-hour time limit) and a hands-on evaluation (1-hour time limit)

Note: There will NOT be a review given at the site on the day of the exam.

This course is for individuals currently holding Backflow Prevention Assembly Tester certification but whose certification is due to expire. Assembly testers hold valid certification for two years from the date of initial certification and/or recertification. Recertification will be awarded after successful completion of a hands-on lab test (RP and DC) and a 50-question written exam. UF/TREEO testers may use written instructions during the hands-on portion of the exam with a 10-point penalty.

If your certification is from a center other than a UF TREEO-sponsored organization, you are required to take the [Backflow Prevention Review](#) course as well as the Backflow Prevention Exam. Those holding certification from an alternate organization are required to sit for an 80-question exam and hands-on evaluation (RP, DC and PVB) in our working lab. All exams are closed book. Upon successful completion of both the written and hands-on exam you will be awarded UF TREEO certification in Backflow Prevention Assembly. Costs: \$150 for both, review course and exam.



Backflow Prevention

CEUs: 3.0; FBPE PDHs 0004040: 30.0

FDEP OCP DW/WW CEUs: 3.0: Intermediate: 4782

FBPR CLIB Provider #:0000995; Course #: 0003509; Hours: 18.5
 (Includes BSP)

Time: 8:00 a.m. - 4:30 p.m.

Cross-Connection Control: Ordinance and Organization

June 25-26, 2009 Gainesville, FL 090306

\$395

CEUs: 1; FBPE PDHs 0004040: 10.0

FDEP OCP DW/WW CEUs: 1.0: Advanced: 4785

Time: Day One: 8:30a.m. - 5 p.m.

Time: Day Two: 8:30 a.m. - noon

Cross connection means any physical arrangement whereby a public water supply is connected, directly or indirectly, with any other water supply system, sewer, drain, conduit, pool, storage reservoir, plumbing fixture, or other device which contains or may contain contaminated liquid. In order to manage such a system, cross-connection professionals must be trained in the essentials of a good cross-connection control program. This course is designed to meet the needs of the cross-connection professional by focusing on the legal aspects of cross connection, retrofitting existing facilities, new construction, testing and maintenance, record keeping, control of assemblies, and training of personnel. This is an intensive two-day program and part three of the Program Manager Series.

TREEO recommends that participants purchase the publication titled: Recommended Practice of Backflow Prevention and Cross-Connection Control (AWWA publication No. 30014, call 800/926-7337).

Cross-Connection Control: Survey and Inspection

June 23-24, 2009 Gainesville, FL 090307

\$395

CEUs: 1.1; FBPE PDHs 0004040: 11.0

FDEP OCP DW/WW CEU: 1.1: Intermediate: 4784

FBPR CLIB Provider #: 0000995, Course #: 0000712, 13.0 hours
 (Includes BSP)

Time: Day One: 8:30 a.m. - 4:30 p.m.

Time: Day Two: 8:30a.m. - 4:00 p.m.

Survey and inspection is an integral part of a well managed cross-

Introduction to Backflow Prevention

May 11, 2009	Gainesville, FL	090312-1
June 22, 2009	Gainesville, FL	090308
July 20, 2009	Gainesville, FL	100096-1
Sep. 14, 2009	Gainesville, FL	100092-1
Dec. 7, 2009	Gainesville, FL	100091

\$125

CEUs: 0.7; FBPE PDHs 0004040: 7.0

FDEP OCP DW/WW CEUs: 0.7: Basic: 4781

FBPR CLIB Provider #: 0000995, Course #: 0000708, 7.0 hours
 (Includes BSP) Time: 8:00 a.m. - 4:30 p.m.

This course is the first day of the Backflow Prevention Tester Training and Certification. Topics include: basic backflow prevention terminology, hydraulic conditions that cause backflow, state and federal backflow prevention regulations, and additional responsibilities and liabilities. Introduction to Backflow provides the participant with a broad and basic understanding of various backflow devices. Time is spent discussing what is necessary for a functioning well-maintained and managed backflow program.



Backflow Prevention

connection program. Participants will tour two local facilities to learn how to identify methods for isolation and containment, new construction planning and inspection for cross connection. An exam is administered on day two of the course and those individuals who successfully pass will be awarded certification in Cross Connection Control Inspection. This is part two of the Program Manager series.

Location and Accommodations

Participants are responsible for arranging their accommodations and travel. Special rates are available at the hotels listed. To receive the special rate, reservations must be made at least four weeks prior to the course and you must identify yourself as a participant of this UF/TREEO Course.

Location:

University of Florida TREEO Center
3900 SW 63rd Blvd, Gainesville FL 32608
352/392-9570 ext 216

Accommodations:

Cabot Lodge: 3726 SW 40th Blvd.
Gainesville, FL 32608, tel: (352) 375-2400
toll free: 1-800-843-8735, 2007 Rates: \$69 single/\$74 double

Hampton Inn: 4225 SW 40TH Blvd
Gainesville, FL 32608
352/371-4171, toll free: 1-800-426-7866
2007 Rates: \$79 single/double
Please use this corporate code for reservations: #560024865

Comfort Inn West: 3440 SW 40th Blvd
Gainesville, FL 32608
352/264-1771, 2007 Rates: \$64.99 Standard;
\$69.99 King; \$79.99-\$109.99 Suite

Homewood Suites by Hilton Gainesville: 3333 SW 42nd street
Gainesville, FL 32608
352/335-3133
2009 Rates: Double \$99, Suite \$109; Please use this
corporate code for reservations: #0002693744

To Register

Online: Visit www.treeo.ufl.edu and click on "Health and Safety."

Purchase Order: Government agencies may pay with a purchase order. Fed ID# 59-6002052

REGISTRATION WILL BE CONSIDERED COMPLETE ONLY UPON RECEIPT OF BOTH REGISTRATION FORM AND PAYMENT IN U.S. DOLLARS. ALL REMITTANCES SHOULD BE MADE PAYABLE TO THE UNIVERSITY OF FLORIDA.

Services for Persons with Special Needs

Persons with disabilities who require special accommodations should contact Lauren McCain at 352/392-9570, ext. 212, at least 10 days prior to the course so that proper consideration can be given to the request.

Cancellation Policy

If you cannot attend, written notification must be received at least two working days prior to the course. You may transfer to another course, send a substitute, or receive a refund. In the event that a course is canceled, UF/TREEO is not responsible for non-refundable travel fares or lodging deposits.

The University of Florida is an Equal Opportunity/Affirmative Action educational institution.

© 2009 University of Florida TREEO Center

Excellence in Environmental Training

www.treeo.ufl.edu

3900 SW 63 Blvd • Gainesville, FL 32608 • 352/392-9570